

# BEACON ARCHERS NEWSLETTER, MARCH 2009

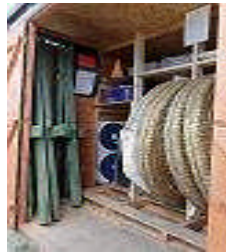


*The Summer Season is here!!*



The time to move outside is upon us and we are hoping to see you all down the field shooting. As with last year the specified club nights are Friday and all day Sunday but, as we saw last year, you could almost guarantee that a number of Beacon members would be shooting on the field any night of the week! Hopefully that will be the case again this summer. Please can we ask that Beacon members carry their club card with them at all times when shooting so that we can identify each other easily and build up a rapport with new members from over the winter season. Club bosses and stands are located in the shed behind the fir trees. Please make sure you use Beacon equipment and not that owned by The Archery Warehouse. Beacon stands are painted green and the bosses marked, whereas The Archery Warehouse equipment is marked with orange. The club has purchased a new trolley to facilitate moving equipment onto the field; this is also located in the shed and is bright green in colour.

Can all members please ensure that all equipment, including target faces, is put away tidily. The shed is quite small and needs to be kept in order so any damage and/or mess can be kept to a minimum. Please dispose of rubbish by taking it home or finding a bin to place it in.



Dunstable Bowmen will again be sharing the field this year as their own field is still unusable. Normally they will shoot to the left of the field, with Beacon to the right. In addition there may be archers who shoot through The Archery Warehouse, along with The Archery Warehouse running periodic courses. Who ever is down shooting on the field please be careful to observe safety rules at all times. Establish if everyone is operating to a single shooting group or if there is enough distance between groups to operate separately. If in doubt ask.

## Summer League

The club wishes to enter the summer league again this year. They have enough archers who will commit to putting in scores to enter a Longbow and a compound team. Are there enough recurve archers in the club

willing to put in scores for a recurve team? We need at least five archers to shoot a **Short Metric (3doz at 50m and 2doz at 30m)** round once a month. May not always be a home match so would involve travel to another club ground. Lifts can usually be organised if transport difficult. If interested please contact Phill ([chairman@beaconarchers.co.uk](mailto:chairman@beaconarchers.co.uk))

## Recent Events

Red Nose Day Shoot. Over **£150** pounds was raised on the evening including the sponsorship raised by Joyce undertaking a speed shoot. Thanks to everyone involved in the organisation of this much enjoyed event.

